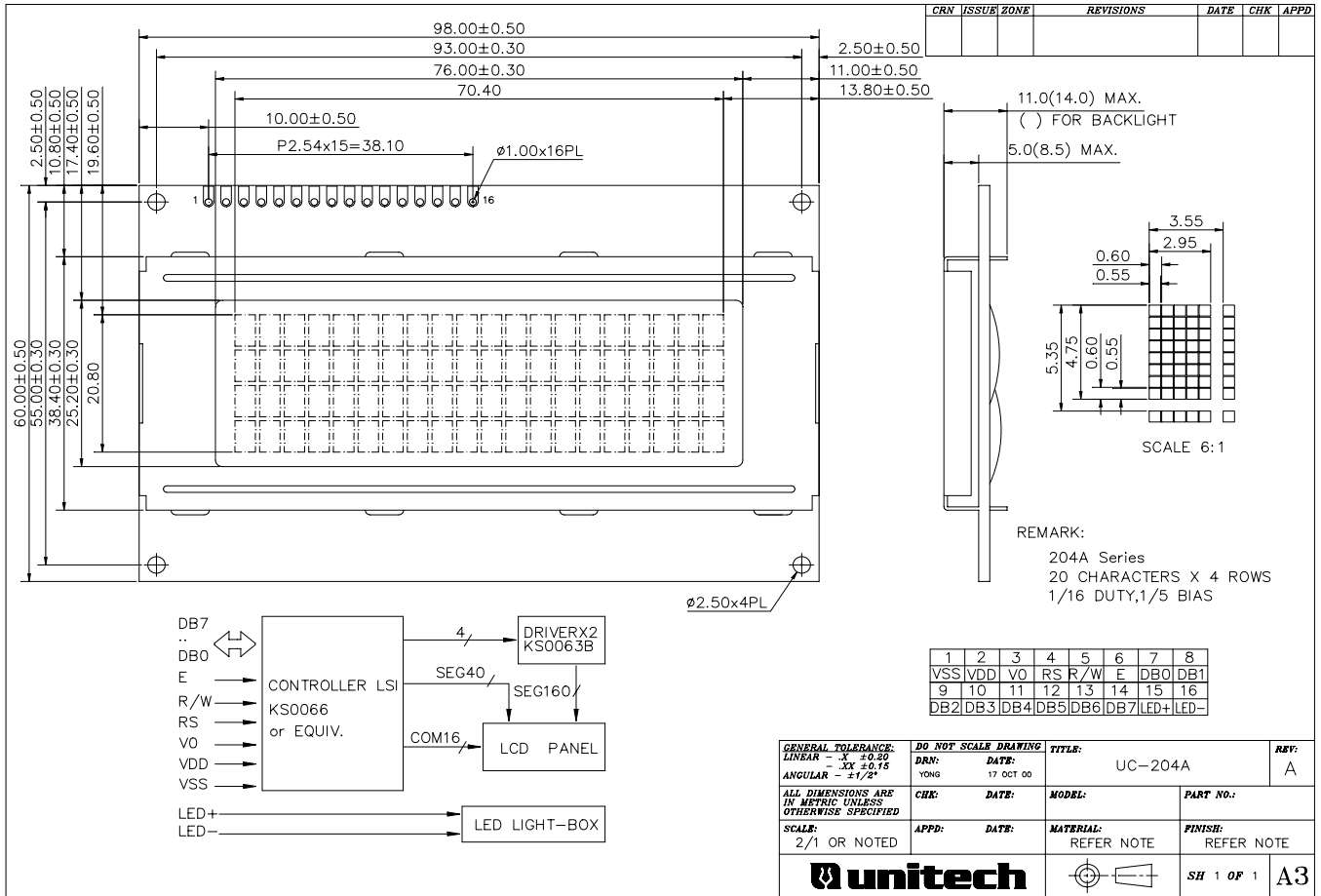


UC-204A 20 CHARACTER x 4 LINE



MECHANICAL SPECIFICATIONS

ITEM	NOMINAL DIMENSIONS	UNIT
MODULE SIZE (WxHxT)	98.0x60.0x11.0(14.0 FOR BACKLIGHT VER.)	mm
VIEWING AREA (WxH)	76.0x25.2	mm
CHARACTER PITCH (W)	3.55x5.35	mm
CHARACTER SIZE (WxH)	2.95x4.75	mm
CHARACTER FONT	5x8 DOTS	--
DOT PITCH (WxH)	0.60x0.60	mm
DOT SIZE (WxH)	0.55x0.55	mm

ELECTRICAL CHARACTERISTICS (VDD=5.0V±0.5V, Ta=25°C)

PARAMETER	SYMBOL	TEST CONDITION	MIN.	TYP.	MAX.	UNIT
OPERATING VOLTAGE	VDD	---	4.5	5.0	5.5	V
SUPPLY CURRENT	IDD	---	---	2.0	4.0	mA
INPUT HIGH VOLTAGE (DB0-DB7, E, R/W, RS)	Vih	---	2.2	---	VDD	V
INPUT LOW VOLTAGE (DB0-DB7, E, R/W, RS)	Vil	---	-0.3	---	0.6	V
OUTPUT HIGH VOLTAGE (DB0-DB7)	Voh	Ioh= -0.205mA	2.4	---	---	V
OUTPUT LOW VOLTAGE (DB0-DB7)	Vol	Iol= 1.2mA	---	---	0.4	V

ABSOLUTE MAX. RATINGS FOR LED BACKLIGHT

PARAMETER	SYMBOL	TEST CONDITION	MIN.	TYP.	MAX.	UNIT
LED FORWARD CURRENT	If	Ta=25°C, Vf=4.1V	---	180	216	mA
LED ALLOWABLE DISSIPATION	Pd	Vr=5.0V MAX.	---	738	8856	mW