

STANDARD KEYPADS

GENERAL SPECIFICATION

- Contact rating: 20mA, 24VDC
- Contact resistance: 200 ohm max
- Life: 1,000,000 cycles per key
- Operating Temperature: -20°C to +60°C
- Storage Temperature: -40°C to +65°C

KEYPAD PART NUMBER INFORMATION

AK-X X X X - X - X X X - X X - X X
 (a) (b) (c)(d)(e) (f) (g)

(a) **MODEL NUMBER:** 101, 102, 103, 104, 207, 304, 304-FM, 507, 707, 804, 1604, 1607

(b) **LEGEND (CHARACTER) TYPE:** A (ALPHA-NUMERIC LEGEND)
 N (NUMERIC LEGEND)
 B (BLANK)
 AR (ARROW)

(c) **BEZEL COLOR:** W: WHITE COLOR
 B: BLACK COLOR
 G: GRAY COLOR
 I: IVORY COLOR
 S: SILVER COLOR FOR METAL BEZEL

(d) **KEYTOP COLOR:** W: WHITE COLOR
 B: BLACK COLOR
 G: GRAY COLOR
 I: IVORY COLOR
 S: SILVER COLOR FOR METAL KEYPAD

(e) **LEGEND (CHARACTER) COLOR:** W: WHITE COLOR
 B: BLACK COLOR
 Y: YELLOW COLOR
 L: LED LIGHTING (BACKLIGHTING)

(f) **WATER PROOF:** WP

(g) **METAL BEZEL, METAL KEYPAD:** MM

STANDARD MATRIX CIRCUIT DIAGRAM

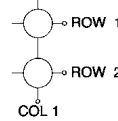
CIRCUIT DIAGRAM



AK-101

OUTPUT ARRANGEMENT	
OUTPUT PIN NO.	SYMBOL
1	COL 1
2	ROW 1

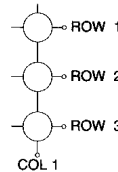
CIRCUIT DIAGRAM



AK-102

OUTPUT ARRANGEMENT	
OUTPUT PIN NO.	SYMBOL
1	ROW 1
2	ROW 2
3	COL 1

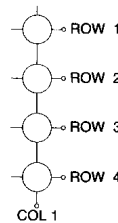
CIRCUIT DIAGRAM



AK-103

OUTPUT ARRANGEMENT	
OUTPUT PIN NO.	SYMBOL
1	ROW 1
2	ROW 2
3	ROW 3
4	COL 1

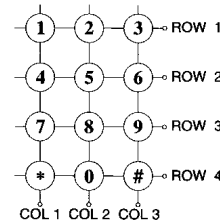
CIRCUIT DIAGRAM



AK-104

OUTPUT ARRANGEMENT	
OUTPUT PIN NO.	SYMBOL
1	ROW 1
2	ROW 2
3	ROW 3
4	ROW 4
5	COL 1

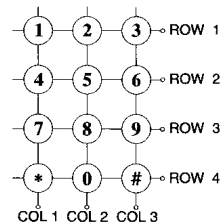
CIRCUIT DIAGRAM



AK-207, 304, 507, 707, 804

OUTPUT ARRANGEMENT	
OUTPUT PIN NO.	SYMBOL
1	COL 2
2	ROW 1
3	COL 1
4	ROW 4
5	COL 3
6	ROW 3
7	ROW 2

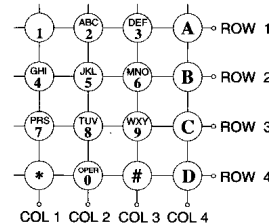
CIRCUIT DIAGRAM



AK-304-FM

OUTPUT ARRANGEMENT	
OUTPUT PIN NO.	SYMBOL
1	ROW
2	ROW 2
3	ROW 3
4	ROW 4
5	COL 1
6	COL 2
7	COL 3

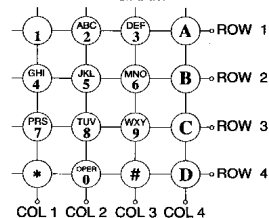
CIRCUIT DIAGRAM



AK-1604

OUTPUT ARRANGEMENT	
OUTPUT PIN NO.	SYMBOL
1	COL 1
2	COL 2
3	COL 3
4	COL 4
5	ROW 1
6	ROW 2
7	ROW 3
8	ROW 4

CIRCUIT DIAGRAM



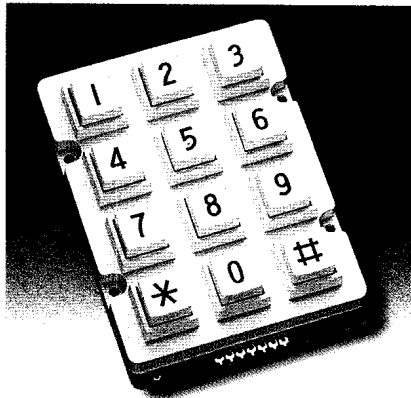
AK-1607

OUTPUT ARRANGEMENT	
OUTPUT PIN NO.	SYMBOL
1	ROW 2
2	ROW 3
3	COL 1
4	ROW 4
5	COL 2
6	COL 3
7	COL 4
8	ROW 1

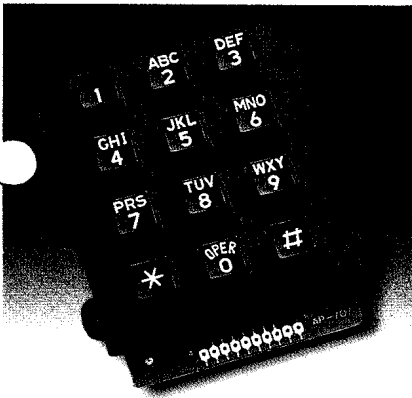
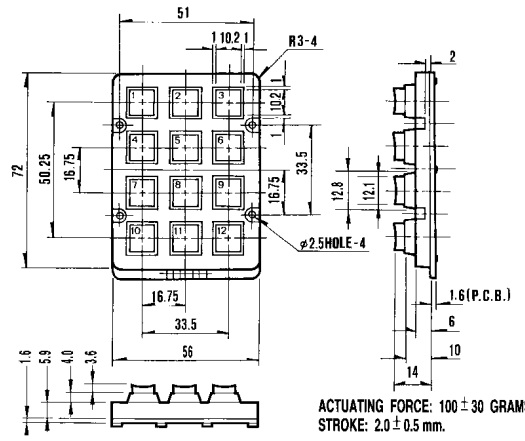
TELEPHONE KEYPAD (PLASTIC)



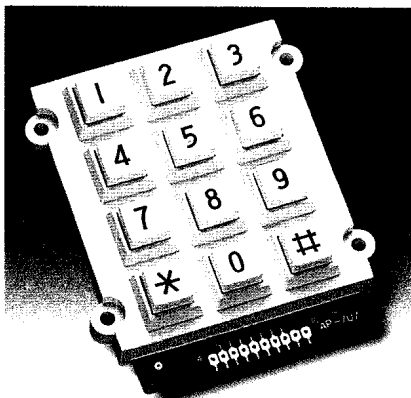
AK-207-A-BBW



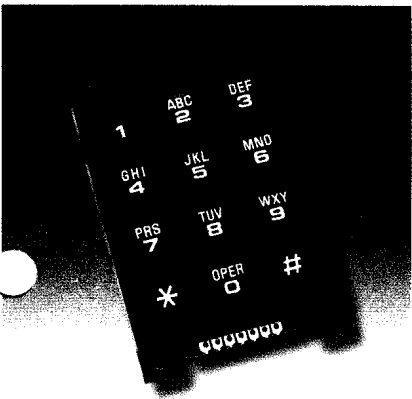
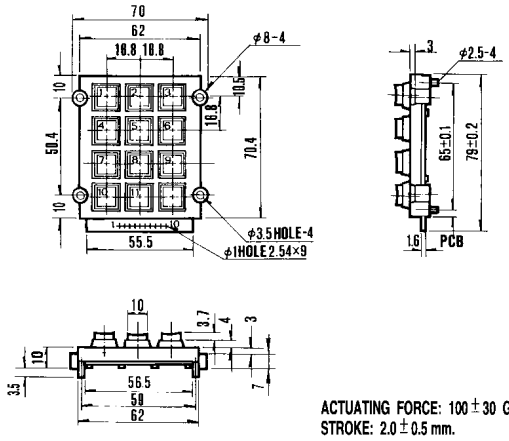
AK-207-N-WWB



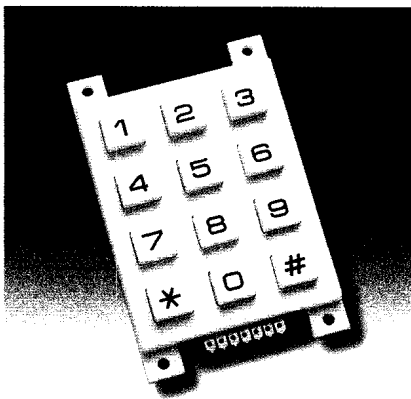
AK-707-A-BBW



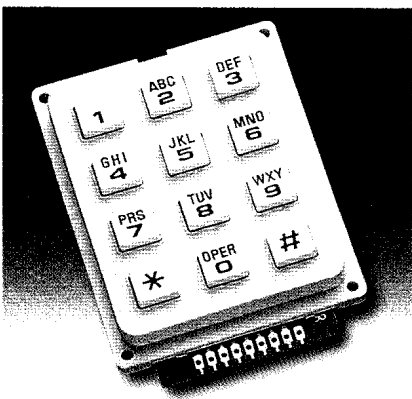
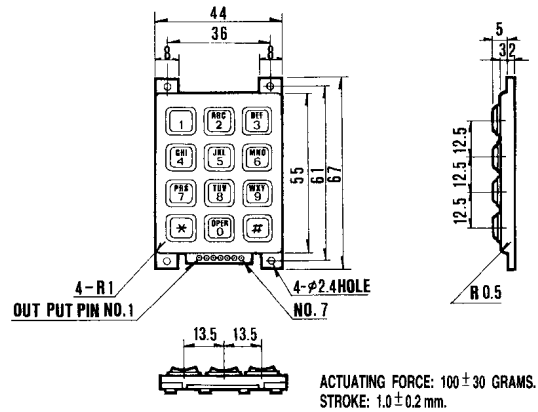
AK-707-N-WWB



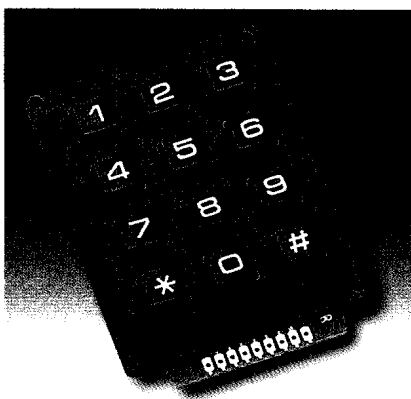
AK-804-A-BBW-BOT



AK-804-N-WWB-BOT



AK-304-A-WWB



AK-304-N-BBW

